

Diodes & Transistors

Introduction

In ECE 401, you can choose from a dozen different circuits to build. Regardless of which one you select, your overall design:

- Must operate at 5VDC
- Must have LEDs operating at 10mA +/- 2mA
- Must have one NPN and one PNP transistor (or more), capable of driving a 100mA load
- Must have at least one IC (PIC18F2620, MCP602 op-amp, 555 timer)

This lecture covers:

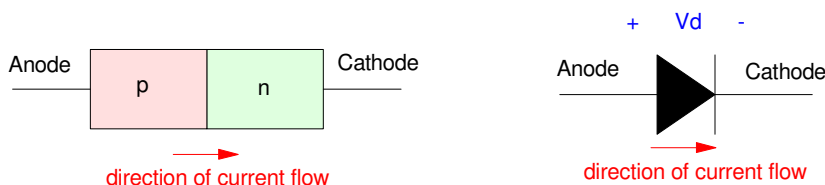
- Analysis and design of LED circuits,
- Analysis and design of NPN and PNP electronic switches,
- Analysis and design of a comparator, and
- Analysis and design of 555 timers

Diodes

A diode is a semiconductor device made up of a pn junction (covered in ECE 320 Electronics I). Diodes act as valves:

- Current can flow from the anode to the cathode,
- Current is blocked if it tries to flow from the cathode to the anode.

Because of this, the symbol for a diode looks like an arrow: this arrow serves as a reminder for which way the current can flow.

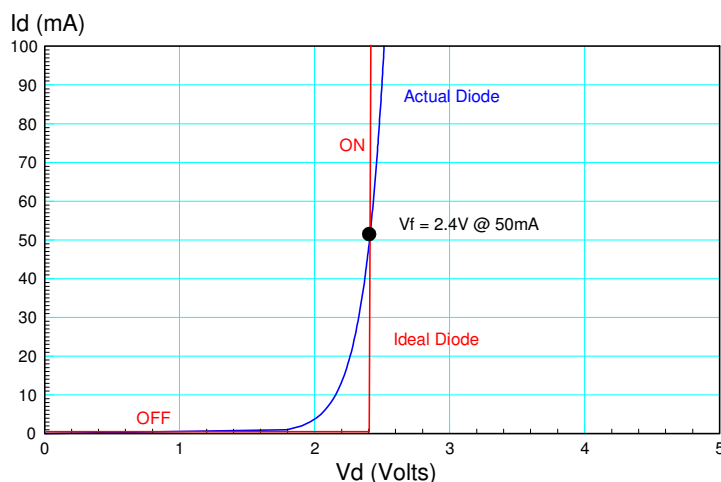


Symbol for a diode: Diodes only allow current to flow from the anode to the cathode

The VI characteristics of diodes are highly nonlinear. This makes analysis of diode circuits very difficult. To simplify circuit analysis, *ideal diode* models are usually used. This model approximates the nonlinear characteristic with two linear models:

- $I_d = 0$ when $V_d < V_f$
- $V_d = V_f$ when $I_d > 0$

While not perfect, the ideal diode model usually gives results which are close enough for most purposes. For more accurate results, nonlinear circuit simulators, such as CircuitLab, can be used.



To simplify circuit analysis, the nonlinear diode VI characteristics (blue) are replaced with an ideal diode model (red)

V_f acts like a turn-on voltage:

- If you try to apply more than V_f volts across the diode, it turns on.
- If you apply less than V_f volts across the diode, it turns off.

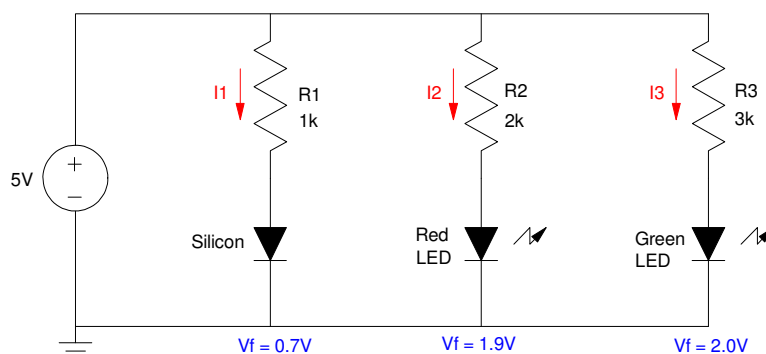
The value of V_f depends upon the diode. Some typical values are:

- Germanium Diode: $V_f = 0.3V$
- Silicon Diode: $V_f = 0.7V$
- Red LED: $V_f = 1.9V$
- Yellow LED: $V_f = 2.0V$
- Green LED: $V_f = 2.0V$

Diode Circuit Analysis: To analyze a circuit with a diode, you first have to determine whether the diode is on or off. This can be a bit of guesswork. If you guess correctly, the circuit will work, meaning

- Diodes which are on have $I_d > 0$, and
- Diodes which are off have $V_d < V_f$

For example, determine the current through each diode for the following circuit:



Diode Circuit: Determine the current in each diode

In this case, the diodes have to be on since $5V > V_f$ for each diode. So, assume they are on.

The current can then be found as

$$I_1 = \left(\frac{5V - 0.7V}{1k} \right) = 4.3mA$$

$$I_2 = \left(\frac{5V - 1.9V}{2k} \right) = 1.55mA$$

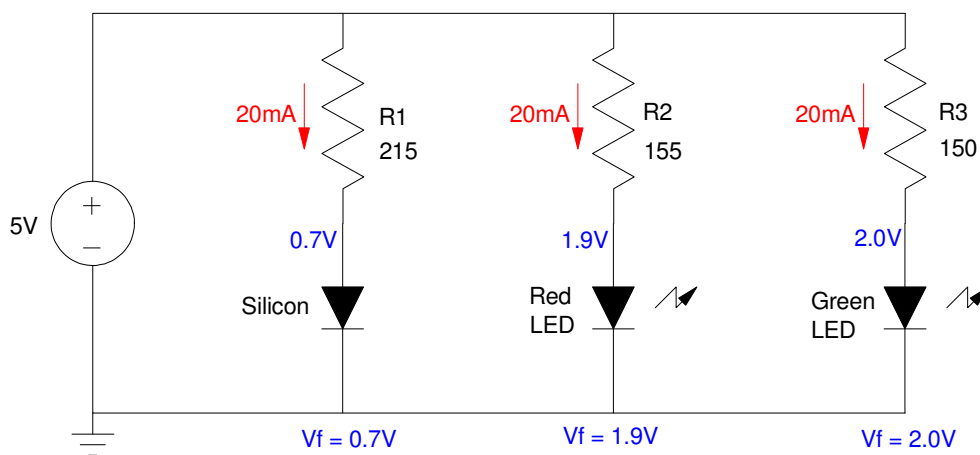
$$I_3 = \left(\frac{5V - 2.0V}{3k} \right) = 1.00mA$$

Diode Circuit Design: If you want to change the current through the diodes, change the resistor connected to it. For example, to set all three currents to 20mA

$$R_1 = \left(\frac{5V - 0.7V}{20mA} \right) = 215\Omega$$

$$R_2 = \left(\frac{5V - 1.9V}{20mA} \right) = 155\Omega$$

$$R_3 = \left(\frac{5V - 2.0V}{20mA} \right) = 150\Omega$$



Resistors adjusted so that 20mA flows through each diode

Light Emitting Diodes (LEDs)

LEDs are nothing more than diodes - except that they produce light proportional to the current flowing through them. As diodes, they can be approximated with an ideal-diode model:

- $I_d = 0$ if $V_d < V_f$
- $V_d = V_f$ if $I_d > 0$

The on-voltage (V_f) depends upon the diode and is usually specified in the diode's data sheets:

LED	V_f	mcd	Wavelength	Cost	Digikey PN
Red	1.9V @ 20mA	30mcd @ 20mA	645nm	\$0.13	732-5016-ND
Yellow	2.0V @ 20mA	450mcd @ 20mA	592nm	\$0.18	732-5018-ND
Green	2.1V @ 20mA	140mcd @ 20mA	572nm	\$0.21	732-5017-ND

The brightness of an LED is proportional to the current flowing through the diode: if you halve the current, you halve the brightness. For example, the following soldering kit from Amazon varies the current (and brightness) of each diode by varying the resistor connected to the diode



LED Soldering Kit from Amazon

Assuming a 9V source (the kit assume you're using a 9V battery). the current and brightness of the first diode (330 Ohms) is:

$$I = \left(\frac{9V - 2.0V}{330\Omega} \right) = 21.21mA$$

The brightness is then proportional to this current where 20mA = 450mcd:

$$\left(\frac{21.21mA}{20mA} \right) 450mcd = 477.2mcd$$

Diodes & Voltage Regulation

In ECE 401,

- Power to your PCB comes from a 9V battery, while
- Your components on your PCB operate off of 5VDC.

This creates a problem: how to generate 5VDC, capable of driving 100mA, using a 9V battery.

There are several ways to convert 9VDC to 5VDC. You could use

- A 7805SR Buck Converter: (\$13, >90% efficient), or
- An LM7805 Voltage Regulator (\$1.19, 55% efficient), or
- Many other IC's.

For ECE 401, we'll be using an LM7805 because they work, they're fairly inexpensive, and the power used in the circuits in this class are low enough that we don't worry too much about being only 55% efficient.




Image shown is a representation only. Exact specifications should be obtained from the product data sheet.

LM7805CT

105,263 In Stock

Digi-Key Part Number	2156-LM7805CT-ND
Manufacturer	Fairchild Semiconductor
Manufacturer Product Number	LM7805CT
Description	IC REG LINEAR FIXED POS STD REG
Detailed Description	Linear Voltage Regulator IC Positive Fixed 1 Output 1.5A TO-220-3
Customer Reference	<input style="width: 100%;" type="text" value="Customer Reference"/>
Datasheet	📄 Datasheet
EDA/CAD Models	LM7805CT Models

Bulk	
QTY	UNIT PRICE
253	\$1.19000

LM7805 Voltage Regulator from Digikey. These ICs are fairly inexpensive and available.

If you look at the data sheets for a LM7805, you can pull out the limits of this IC:

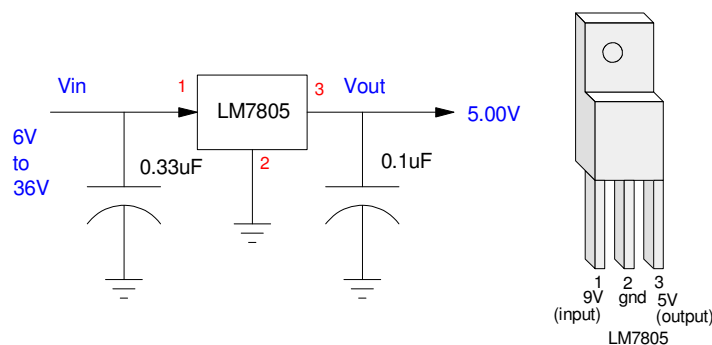
- Output Voltage: 4.80V to 5.20V with 1A load
- Peak Current: 2.2A
- Max continuous current: 1A
- Input voltage range: 7V to 36V
- Quiescent Current: < 8mA

What this tells you is

- The LM7805 will operate just fine with a 9V battery,

- It needs less than 8mA to operate, and
- It can drive a 5V load with up to 1A of current

The recommended configuration for a LM7805 is to connect a capacitor at the input (9V) and output (5V). Other than that, they're pretty easy to get to work.



Wiring for an LM7805 Voltage Regulator

A limitation of the LM7805 is its efficiency

- The input current is the same as the output current, plus 8mA to operate the LM7805
- The way the LM7805 works is it dumps voltage. If the input is 9V, the 7805 will dump 4V to produce a 5V output.

This means, assuming the load draws 100mA

- The output power is 500mW (5V * 100mA)
- The input power is 900mW (9V * 100mA)

The efficiency is then

$$\eta = \left(\frac{\text{output power}}{\text{input power}} \right) = \left(\frac{500mW}{900mW} \right) = 55\%$$

It's actually a little less than this since the LM7805 draws some current for its own operation (less than 8mA).

You can buy voltage regulators with higher efficiencies, such as a 7805SR Buck Converter, but these are \$13 each.

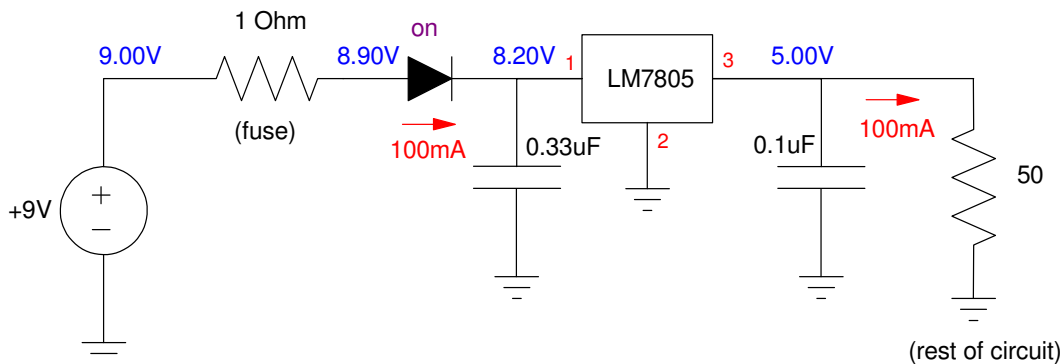
Reverse Polarity Protection & Overcurrent Protection

Another requirement for your PCB in ECE 401 is to add

- Reverse polarity protection (connecting 9V to your PCB backwards will not fry your PCB), and
- Overcurrent protection (if your circuit draws too much current, a fuse blows).

There are several ways to do this.

Method #1: Diode + Fuse. Diodes do not allow current to flow backwards. If you place a diode in series with your 9V battery, the diode will turn off if the 9V battery is inserted backwards.



One method of providing reverse polarity protection: add a diode in series with the 9V power supply.
 note: The 50 Ohm resistor models the rest of your circuit - it isn't included in your actual design.

A disadvantage of this approach is you lose 0.7V through the diode. That's not a major issue here since you're going to dump 4V somewhere to bring 9V down to 5V. The diode just means the LM7805 now only has to dump 3.3V.

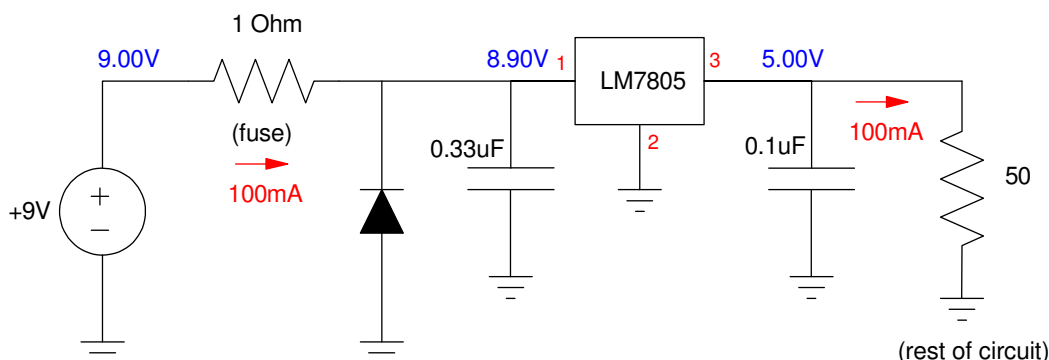
Adding a fuse in series with the 9V supply also protects your circuit from overcurrent: if your circuit tries to draw too much current, the fuse will blow.

In ECE 401, we use a 1 Ohm resistor instead of a fuse since they cost less than 2 cents each.

Method #2: Fuse + Diode.

A second approach is to use a fuse along with a diode.

- If the 9V battery is connected correctly, the diode remains off. The circuit operates as normal.
- If the 9V battery is reversed,
 - The diode turns on, limiting the voltage to the LM7805 to -0.7V,
 - The current through the fuse becomes large (9A), blowing the fuse.



A second method of providing reverse polarity protection and overcurrent protection.

Either circuit works for our application. In ECE 401, you can use either one.

note: The 50 Ohm resistor models the rest of your circuit in ECE 401, assuming your overall circuit draws 100mA. When you build your breadboard and PCB, replace the 50 Ohm resistor with your actual circuit.

BJT Transistors

Whereas diodes act like valves, allowing current to flow in only one direction, BJT transistors act as

- Electronic switches (you can turn a device on and off using 0V & 5V),
- Which amplify current (1mA can turn on and off a device which draws 100mA)

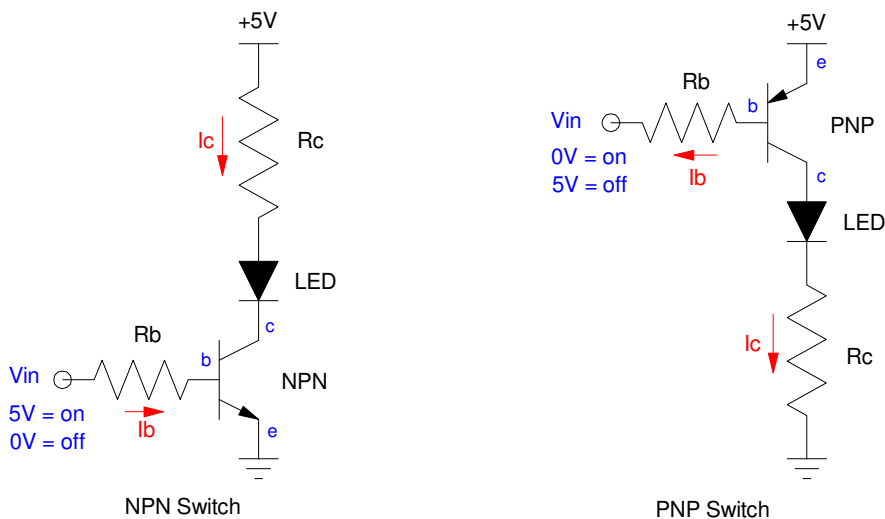
The current amplification and the maximum current a given BJT transistor can handle depends upon which transistor you're using. The specs for the ones used in ECE 401 are as follows:

Spec	3904 NPN	3906 PNP
Current Gain (min)	100	100
Max Current	200mA	200mA
$ V_{be} $ (on)	0.7V	0.7V
$ V_{ce} $ (sat)	0.2V	0.2V
Cost (ea)	\$0.11	\$0.11

Two types of BJT transistors exist:

- PNP: an electronic switch which connects your device to +5V, or
- NPN: an electronic switch which connects your device to ground.

The basic circuit for each of these are as follows:



BJT Switch: Either NPN or PNP transistors can be used.
 NPN transistors act as a switch to ground, PNP transistors act as a switch to power

With the transistors, the arrow going between the base and the emitter is all important:

- The arrow represents a diode (a pn junction), telling you which way the current can flow
- The base current controls the current from the collector to the emitter.

Due to the way the transistor is made, the transistor tries to set I_c according to I_b by the current gain:

$$I_c = \beta I_b = 100 I_b$$

The transistor does this by dumping whatever voltage is necessary to set the current.

A good way to see how a transistor switch operates is to look at the load line for the transistor. Assume that R_c is selected so that $I_c = 20\text{mA}$ when $V_{ce} = 0\text{V}$. Then, the load line will look like the following:

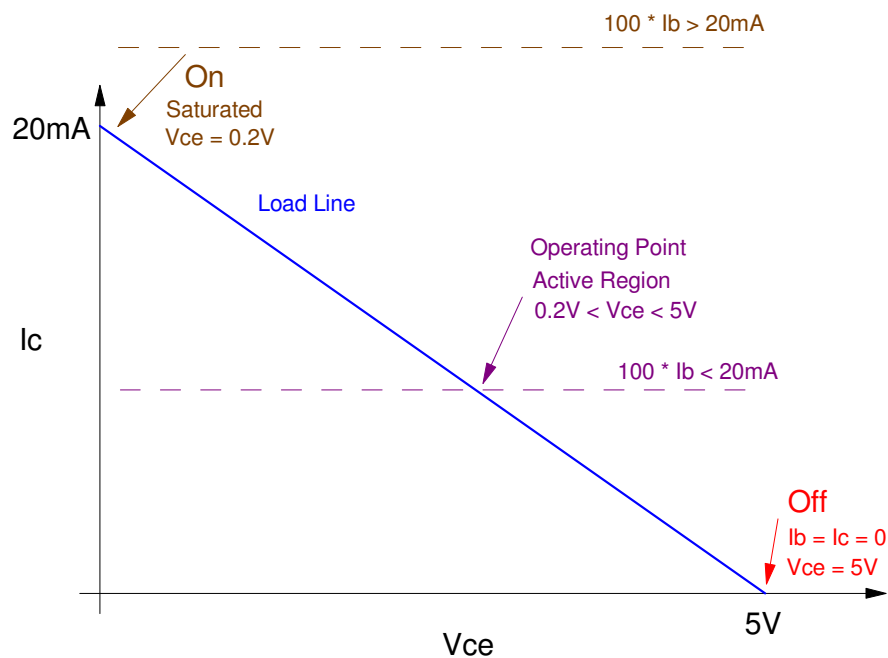
- When $I_c = 0\text{mA}$, $V_{ce} = 5\text{V}$ (the x-axis intercept)
- When $V_{ce} = 0\text{V}$, $I_c = 20\text{mA}$ (the y-axis intercept)
- The line connecting these two points is called *the load line*.

Any solution has to be on the load line somewhere.

When $I_b = 0$ (there is no current through the diode connecting the base and the emitter)

- $I_c = 0$
- $V_{ce} = 5\text{V}$, and
- The transistor is off.

With no current flow, the diode is off.



Load Line for an NPN transistor switch
 You want to operate either in the Off state or the On state (saturated)

As I_b increases,

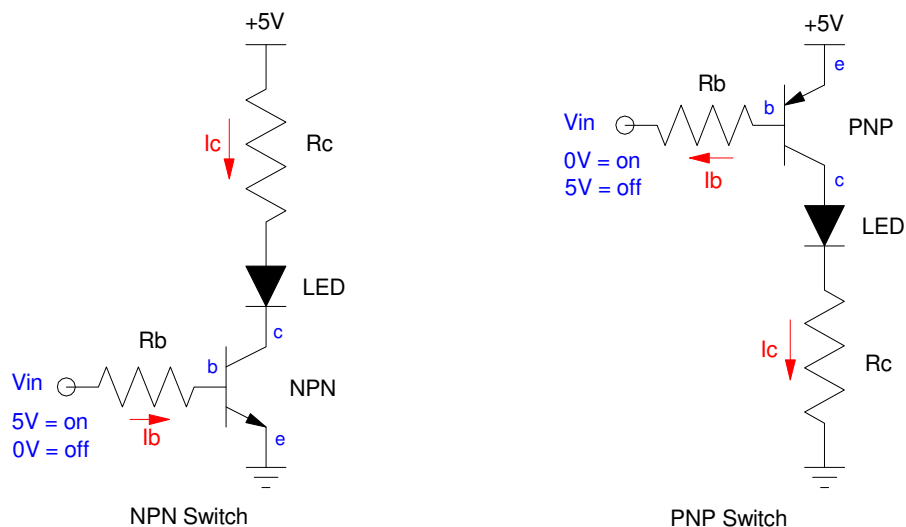
- I_c increases according to the current gain ($I_c = 100 I_b$),
- V_{ce} drops from 5V down to 0.2V, and
- The transistor gets hot ($P = V \cdot I$)

The way the transistor sets the current I_c is by dumping voltage (V_{ce}). This places the transistor in the active region - and the transistor gets hot ($P = V \cdot I > 0$). You want to avoid this when using a transistor as a switch.

If I_b is large enough that $100 I_b > 20mA$, the transistor saturates:

- V_{ce} saturates at its minimum value (0.2V), and
- I_c saturated at its maximum value (a little less than 20mA).
- The transistor is in the On state (saturated)

Analysis of Transistor Switches: In terms of analysis, the currents and voltages are as follows (same equations for both PNP and NPN):



Analysis: Find the voltages and currents

The off state is kind of a gimme: the currents are zero.

For the on-state, assume the transistor is saturated

$$V_{ce} = 200mV$$

$$I_c = \left(\frac{5V - V_f - V_{ce}}{R_c} \right)$$

$$I_b = \left(\frac{5V - 0.7V}{R_b} \right)$$

The check to see that the transistor is saturated is the current you allow ($100 I_b$) must be more than the current you need (I_c)

$$\beta I_b > I_c$$

$$I_b > \left(\frac{I_c}{100} \right)$$

Design of Transistor Switches: In terms of design,

- Pick R_c to set the desired current
- Then pick R_b so that the transistor is saturated ($I_b > I_c/100$)

For example, design a circuit

- To turn on and off a red LED
- At 100mA when on,
- Using a 0V/5V input capable of driving at most 5mA.

Solution: First pick R_c to set the current to 100mA

$$R_c = \left(\frac{5V - 1.9V - 0.2V}{100mA} \right) = 29\Omega$$

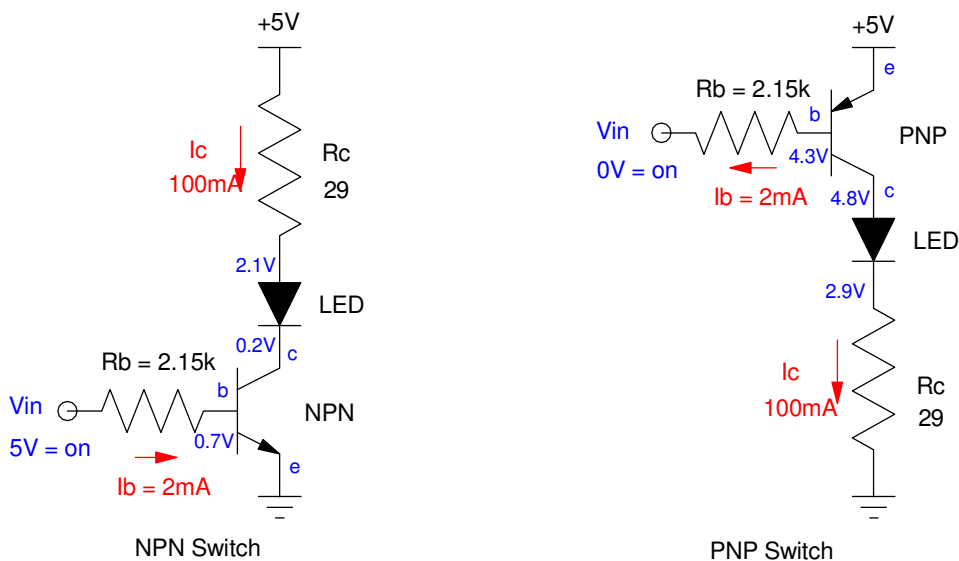
Next, pick I_b so that the transistor is saturated

$$I_b > \left(\frac{I_c}{100} \right) = 1mA$$

Let $I_b = 2mA$

$$R_b = \left(\frac{5V - 0.7V}{2mA} \right) = 2.15k\Omega$$

Two versions of a BJT switch are then as follows.



Resulting Design for 2mA turning on and off 100mA through an LED

Note: If you want to reduce the current to the LED to 10mA (10x smaller), make R_c 10x larger (290 Ohms). Everything else can remain the same.

Homework #3:

Design a circuit for your ECE 401 Senior Design project.

ECE 401 Circuit Requirements

- Must operate off of 5VDC
- Must include at least one integrated circuit
- Must include at least one LED with $I_d = 10\text{mA} \pm 2\text{mA}$
- Must include at least one NPN and one PNP transistor
 - Base current allows 100mA

- Power supply = 9V battery (mark +/- polarity)
 - use a LM7805 regulator to drop 9V to 5V
- Must have a reverse-polarity protection diode
- Must have a 1/4 Watt 1-Ohm resistor in series with the power supply

Update your OneNote document to include

- Your circuit schematics
- Calculations for R's and C's
- Calculations for voltages you expect to see.

Note: If you're using a microprocessor, assume the output pins are either 0V or 5V.