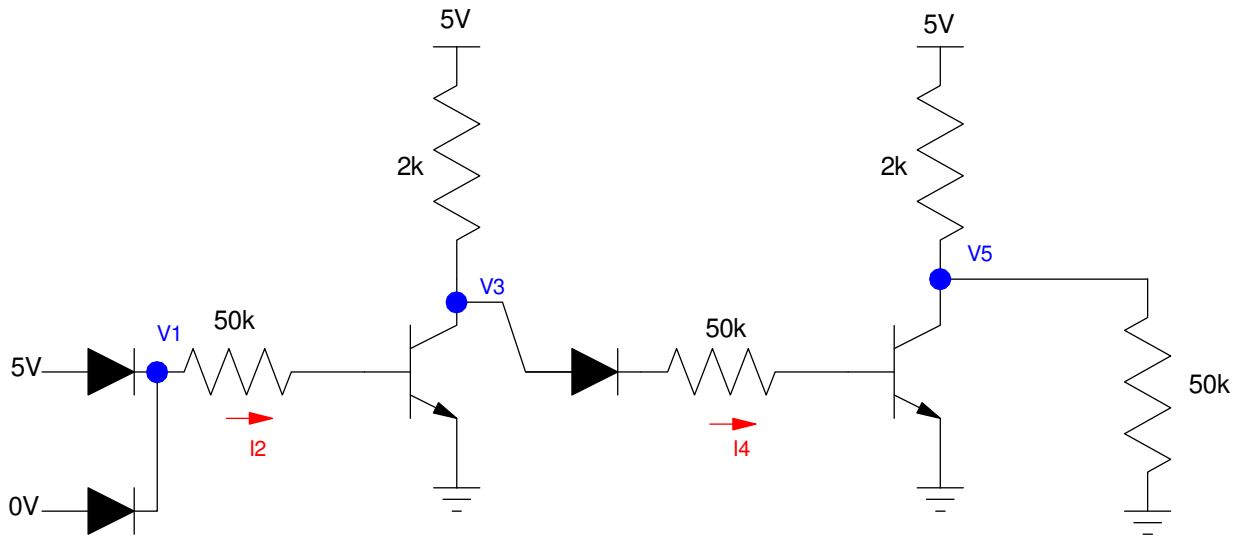


ECE 320 - Homework #8

DTL, TTL Logic, MOSFETs. Due Monday, October 18th

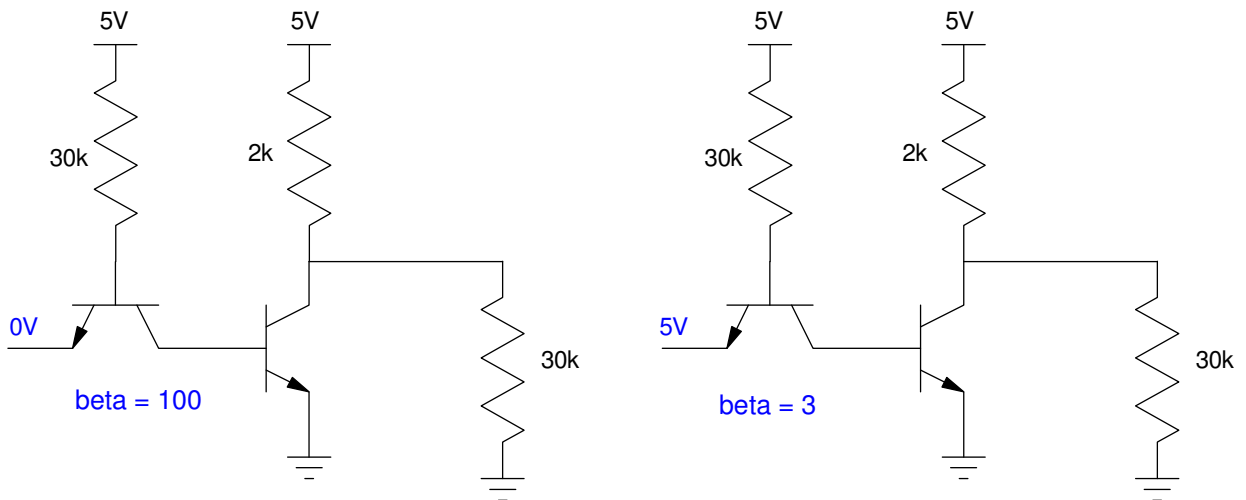
DTL Logic

- 1) Determine the voltages and currents for the following DTL OR gate. Assume 3904 NPN transistors
- 2) Simulate this circuit in CircuitLab to verify your answers



TTL Logic

- 3) Determine the voltages for the following TTL inverter. Assume 3904 transistors.
- 4) Simulate these circuits in CircuitLab to verify your answers



Temperature Alarm using DTL Logic

The circuit below uses a DTL NAND gate to drive the speaker when

- The 555 timer outputs 5V, and
- The comparator outputs 5V,.

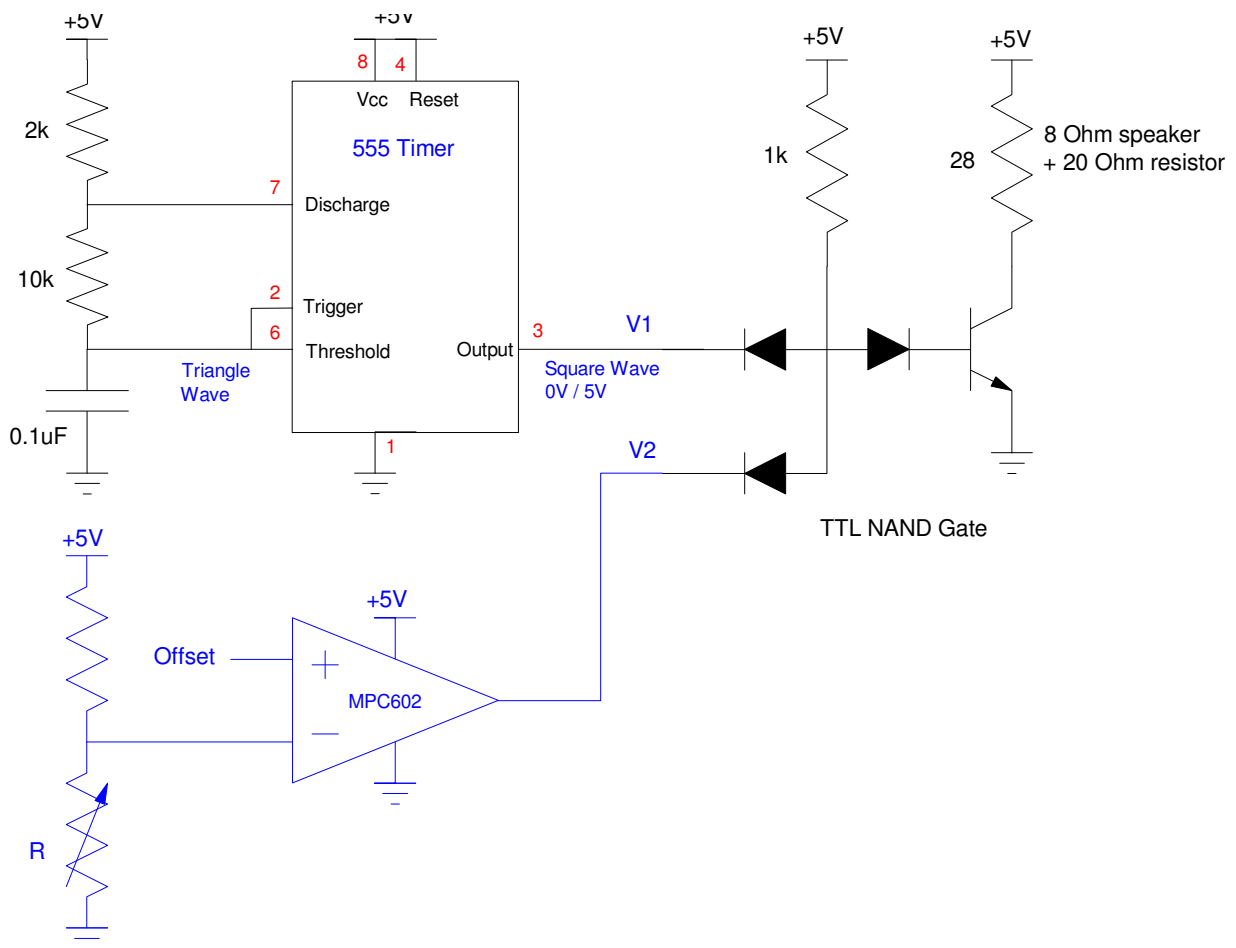
5) Determine the voltages when

- $V_1 = V_2 = 0V$
- $V_1 = V_2 = 5V$
- $V_1 = 0V, V_2 = 5V$

6) Verify your design using CircuitiLab.

Lab: 7) (20pt): Verify your design in hardware (build and test the circuit with your lab kit).

- note: Use a potentiometer to simulate the temperature sensor.



MOSFET

8) Label the operating regions on the graph below (off, ohmic, saturated) and determine the transconductance gain, k_n . Assume the turn-on voltage is $V_t = 1.00V$

9) Draw the load line for the circuit below. From the load line, determine the operating point (V_{ds} , I_{ds}) when

- $V_g = 2V$
- $V_g = 7V$

10) Calculate the operating point (V_{ds} , I_{ds}) when

- $V_g = 2V$
- $V_g = 7V$.

