

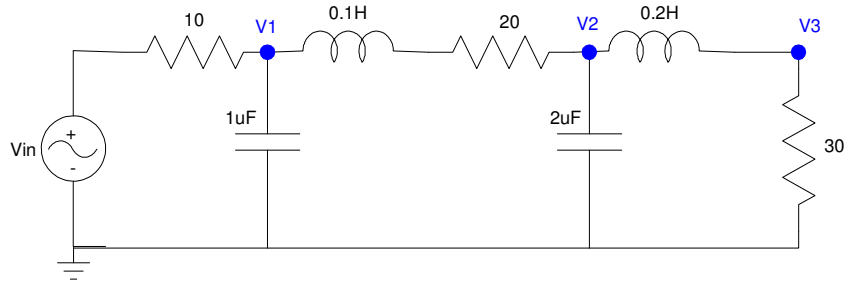
# Kirchoff's Laws with Phasors

1) Write the voltage node equations for the following circuit. Assume

$$V_{in} = 20 \cos(500t) + 5 \sin(500t)$$

2) Write the voltage node equations for the following circuit. Assume

$$V_{in} = 30 \cos(2000t - 50^\circ)$$



Problem 1 & 2

3) Write the current loop equations for the following circuit. Assume

$$V_{in} = 20 \cos(500t) + 5 \sin(500t)$$

4) Write the current loop equations for the following circuit. Assume

$$V_{in} = 30 \cos(2000t - 50^\circ)$$

